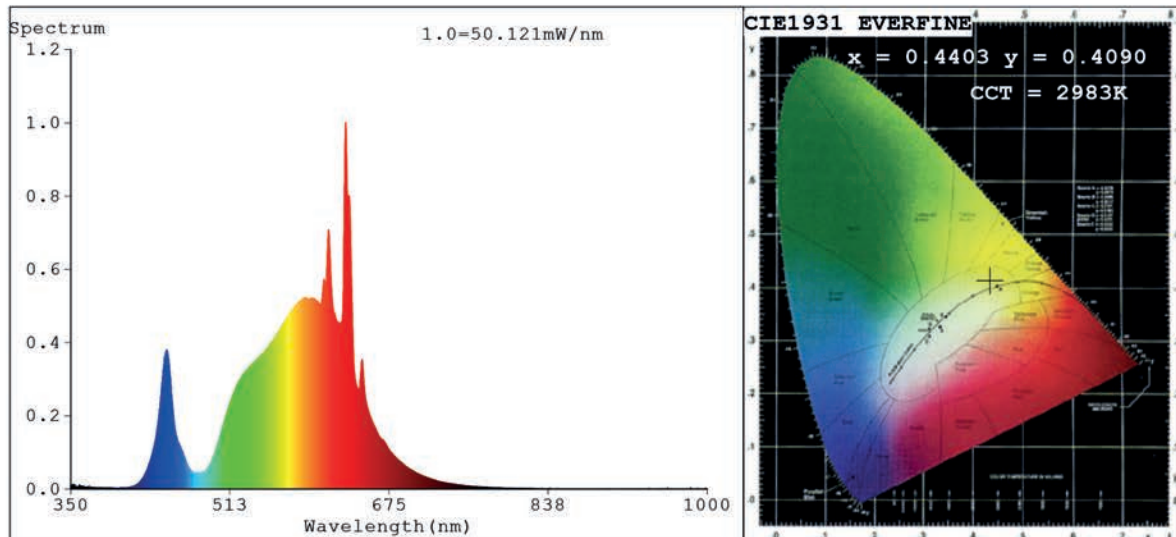


Spectrum Test Report



Color Parameters:

Chromaticity Coordinate: $x=0.4403$ $y=0.4090$ / $u'=0.2506$ $v'=0.5238$
 CCT=2983K (Duv=0.0015) Dominant WL: $\lambda_d = 582.4\text{nm}$ Purity=54.9%
 Ratio: R=22.8% G=75.6% B=1.5%; Peak WL: $\lambda_p = 630.6\text{nm}$ FWHM=9.7nm
 Render Index: Ra=80.4 CRI=73.5 TM30: Rf=78 Rg=100 Lav=586.1nm
 R1 =80 R2 =85 R3 =89 R4 =81 R5 =78 R6 =80 R7 =86
 R8 =65 R9 =14 R10=64 R11=79 R12=55 R13=80 R14=93 R15=74

Photo Parameters:

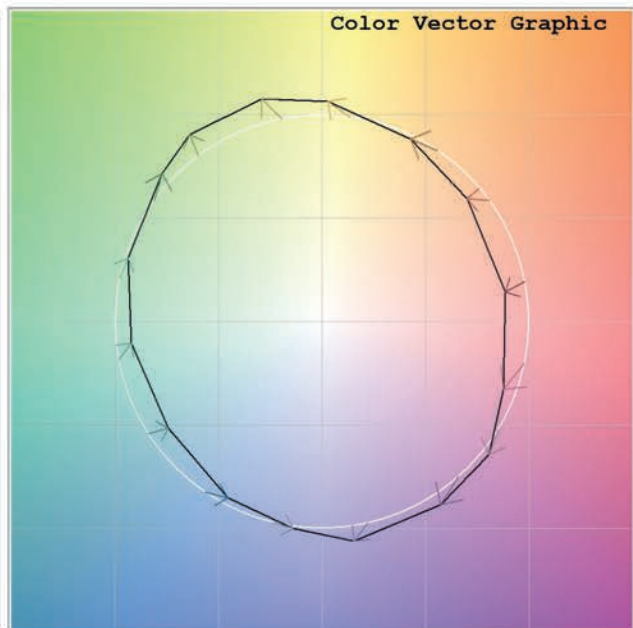
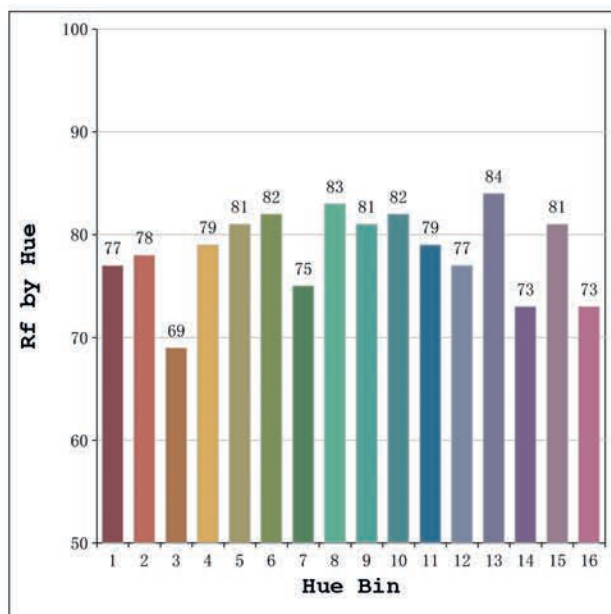
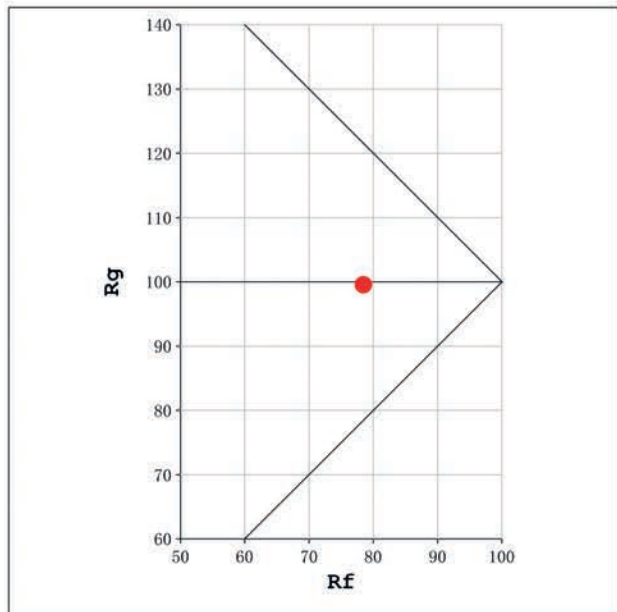
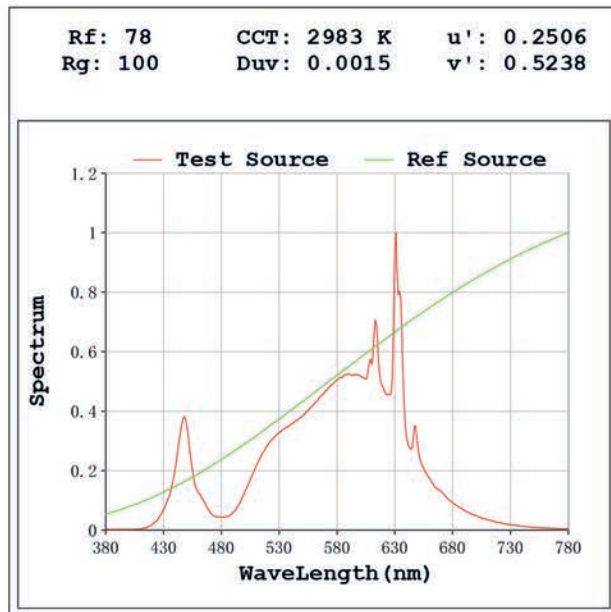
Flux = 1437 lm Eff. : 139.30 lm/W Fe = 4.092 W

Electrical parameters:

V = 23.998 V I = 0.4300 A P = 10.32 W PF = 1.000

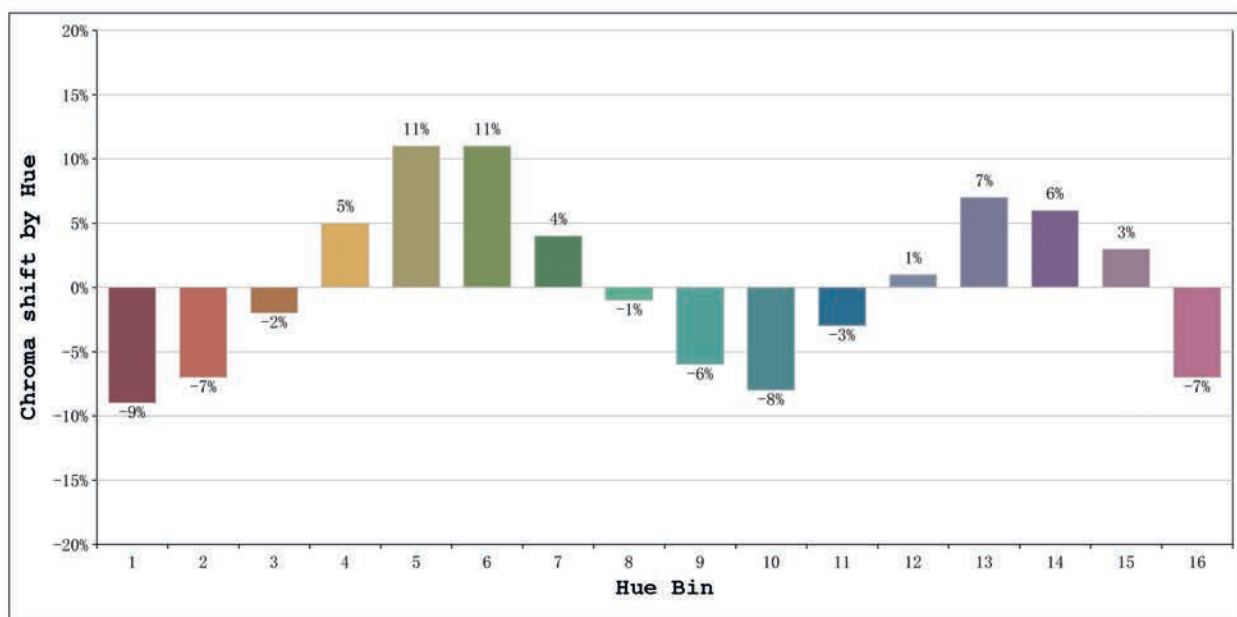
Status: Integral T = 603 ms Ip = 49915 (76%)

Model: Ecoled Comfort basic 3000k	Number: 36.085
Tester: Sergio Carneros	Date: 2024-11-21 13:53:58
Temperature: 27Deg	Humidity: 35%
Manufacturer: Luz Negra S.L.	Remarks: tira rigida de 480mm



Model:Ecoled Comfort basic 3000k
 Tester:Sergio Carneros
 Temperature:27Deg
 Manufacturer:Luz Negra S.L.

Number: 36.085
 Date:2024-11-21 13:53:58
 Humidity:35%
 Remarks:tira rigida de 480mm



			Graphic shift(%)	
Hue Bin	Hue Angle	Rf	Chroma	Hue
1	0.0° - 22.5°	77	-9	-2
2	22.5° - 45.0°	78	-7	7
3	45.0° - 67.5°	69	-2	14
4	67.5° - 90.0°	79	5	12
5	90.0° - 112.5°	81	11	8
6	112.5° - 135.0°	82	11	-1
7	135.0° - 157.5°	75	4	-12
8	157.5° - 180.0°	83	-1	-9
9	180.0° - 202.5°	81	-6	-6
10	202.5° - 225.0°	82	-8	3
11	225.0° - 247.5°	79	-3	11
12	247.5° - 270.0°	77	1	10
13	270.0° - 292.5°	84	7	-7
14	292.5° - 315.0°	73	6	-14
15	315.0° - 337.5°	81	3	-12
16	337.5° - 360.0°	73	-7	-13

Model:Ecoled Comfort basic 3000k Number: 36.085
 Tester:Sergio Carneros Date:2024-11-21 13:53:58
 Temperature:27Deg Humidity:35%
 Manufacturer:Luz Negra S.L. Remarks:tira rigida de 480mm